



## Outdoors

The Campsite is set amid three acres and can be used equipped or unequipped.

### Facilities:

- wet weather shelter & mains water
- hall with tables & chairs
- kitchen (fridge, freezer, microwave)
- toilets, showers & disabled facilities
- altar fires & gas burners

### Campsite:

- campfire circle
- backwoods cooking area
- pioneering poles & trimtrack
- fully equipped for 6 patrols
- range light weight tents, activity tents, dining, shelter & marquee

*For further details please see our website.*

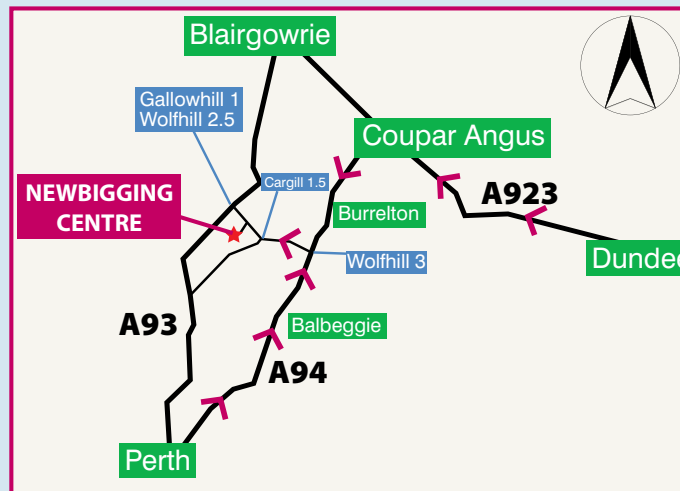
## Wigwams

- New adventure for Outdoor Camps
- Complements traditional camping
- Permanent wooden structure



[www.wigwamcabins.com](http://www.wigwamcabins.com)

- Insulated and cosy
- Comfy foam mattresses
- Suitable for all weathers!



### Signposts at junction

OS Map 56 Grid Reference 158352

Dundee 20miles, takes approx 40 mins  
Perth 10miles, takes approx 20 mins

Wolfhill turnoff 3miles from Balbeggie  
& 1.5miles from Burrelton on A94

## How to Book

For more information & bookings:

[www.girlguidingdundee.org.uk/newbigging.html](http://www.girlguidingdundee.org.uk/newbigging.html)

[newbigging@girlguidingdundee.org.uk](mailto:newbigging@girlguidingdundee.org.uk)

Even if you can't stay, come & have a look!



# Girlguiding

Dundee



## Newbigging Outdoor Centre

*Offers a range of affordable accommodation and provides a comfortable base for a wide range of activities.*

Newbigging Outdoor Centre  
Coupar Angus  
Blairgowrie PH13 9PU

[www.girlguidingdundee.org.uk/newbigging.html](http://www.girlguidingdundee.org.uk/newbigging.html)

Registered Charity Number SC 001633



Welcome

Girlguiding Dundee welcomes you to visit our Newbigging Outdoor Centre set in quiet and rural Perthshire.

The Centre while run by the Guides, is open to all recognised youth groups from both the voluntary and statutory sectors. Both house and campsite are available for hire and can be booked for a day, weekend or week.

We look forward to welcoming you to Newbigging soon!

## A brief history

Newbigging is an attractive Outdoor Centre owned by Girlguiding Dundee, opened in 1988 by Princess Margaret. It incorporates a substantial stone built house (converted school) that accommodates 30 people, a sheltered garden and a spacious three acre campsite. The car park is large enough for mini buses and several cars. It is located 10 miles from Perth, 20 miles from Dundee and 7 miles south of Blairgowrie.

It is run as a charity by volunteers.

“Girlguiding believes in the value of learning by doing.”

## Holiday House

Fully equipped for 30 people.

### Facilities:

- kitchen (cookers, fridge, freezer, etc)
- large hall with stackable tables & chairs
- 3 dorms sleeping 8 (bunk beds)
- leaders room sleeping 4 (bunk beds)
- leaders room sleeping 2 (single beds)
- toilets, showers & disabled facilities
- large garden with swings & barbeque
- musical instruments & games available



Well equipped kitchen



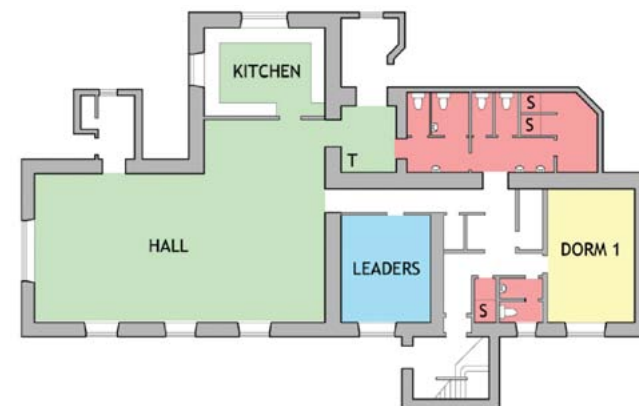
Large Hall



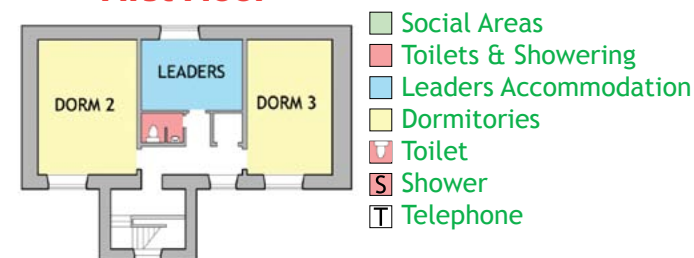
Dorms

## Holiday House Layout

### Ground Floor



### First Floor



- Social Areas
- Toilets & Showering
- Leaders Accommodation
- Dormitories
- Toilet
- Shower
- Telephone

## Useful information

Burrelton village is nearby with a butchers and post-office. The local town of Coupar Angus has supermarkets and a choice of places to eat. Online grocery shopping will deliver to Newbigging.

### MINOR INJURIES UNIT

Blairgowrie Community Hospital, Perth Road, Blairgowrie, PH10 6EE Tel: 01250 874466

### ACCIDENT AND EMERGENCY HOSPITALS

Perth Royal Infirmary, Perth, PH1 1NX  
Tel: 01738 623 311  
Ninewells Hospital, Dundee, DD1 9SY  
Tel: 01382 660 111

NHS 24 Helpline Tel: 08454 24 24 24

For further details please see our website:  
[www.girlguidingdundee.org.uk/newbigging.html](http://www.girlguidingdundee.org.uk/newbigging.html)